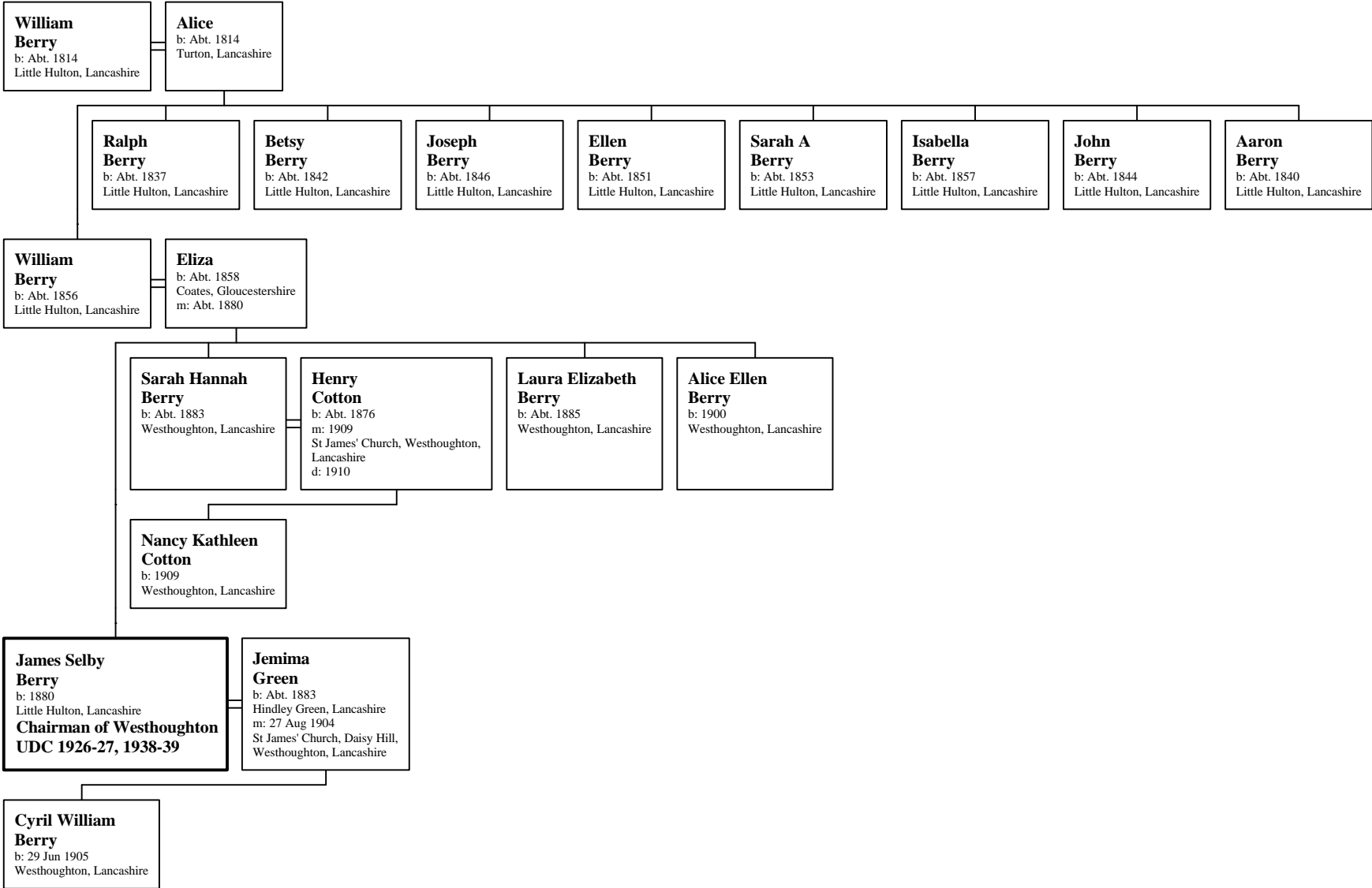


Family of James Selby Berry



William Berry
b: Abt. 1814
Little Hulton, Lancashire

Alice
b: Abt. 1814
Turton, Lancashire

Ralph Berry
b: Abt. 1837
Little Hulton, Lancashire

Betsy Berry
b: Abt. 1842
Little Hulton, Lancashire

Joseph Berry
b: Abt. 1846
Little Hulton, Lancashire

Ellen Berry
b: Abt. 1851
Little Hulton, Lancashire

Sarah A Berry
b: Abt. 1853
Little Hulton, Lancashire

Isabella Berry
b: Abt. 1857
Little Hulton, Lancashire

John Berry
b: Abt. 1844
Little Hulton, Lancashire

Aaron Berry
b: Abt. 1840
Little Hulton, Lancashire

William Berry
b: Abt. 1856
Little Hulton, Lancashire

Eliza
b: Abt. 1858
Coates, Gloucestershire
m: Abt. 1880

Sarah Hannah Berry
b: Abt. 1883
Westhoughton, Lancashire

Henry Cotton
b: Abt. 1876
m: 1909
St James' Church, Westhoughton,
Lancashire
d: 1910

Laura Elizabeth Berry
b: Abt. 1885
Westhoughton, Lancashire

Alice Ellen Berry
b: 1900
Westhoughton, Lancashire

Nancy Kathleen Cotton
b: 1909
Westhoughton, Lancashire

James Selby Berry
b: 1880
Little Hulton, Lancashire
Chairman of Westhoughton
UDC 1926-27, 1938-39

Jemima Green
b: Abt. 1883
Hindley Green, Lancashire
m: 27 Aug 1904
St James' Church, Daisy Hill,
Westhoughton, Lancashire

Cyril William Berry
b: 29 Jun 1905
Westhoughton, Lancashire